



VANYA CHAN

Marienstrasse 8. Munich. 80331. Germany

Email: vanya@vanyachan.com | Website: www.vanyachan.com

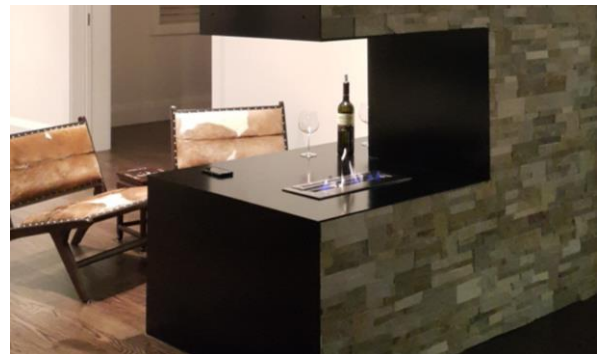
KENSINGTON DR, ON

Private Custom home +11,000 sq ft

2012 – 2015. Concept to Completion.

Freelance designer, in cooperation with
Babyfoot Developments Inc.

1.48 acre lot in Toronto's suburbs. 6 Ensuites,
8 Bathrooms, 1 Powder room, open Kitchen,
formal Dining & Living space, Family room,
Study room – all surrounding a double storey
atrium facing the patio and backyard.
Exterior walls are double framed, rock wool
insulated to passivhaus standards. LED
lighting features, Bioethanol fireplace,
Basement wine cellar, Maids room,
Entertainment room. Separate connection to
annex of 4 door garage, Mudroom, Laundry
room, Roof terrace. NRC Energuide rated 89.





VANYA CHAN

Marienstrasse 8. Munich. 80331. Germany

Email: vanya@vanyachan.com | Website: www.vanyachan.com

ASBURY LANE, ON

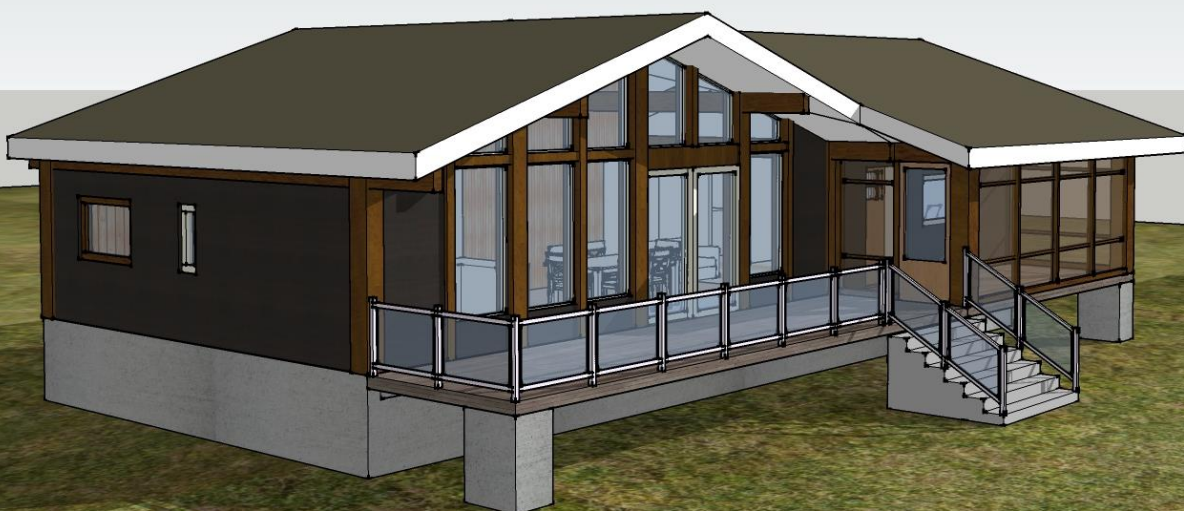
Cottage extension +1,500 sq ft

2015 – Present. Concept design.

Freelance Designer

Expect completion in 2017

A private cottage located next to lake Wren is in need of a renovation. The family has grown in size and wishes for more space. An open kitchen, additional bedroom, screened porch, and extra storage was requested. An addition 20'x24' is proposed attached to the beautiful retreat. Dark faux wood cladding with white trimming on the exterior gives the cottage a new modern look while a new roof will be refitted to unite the old and the new.





VANYA CHAN

Marienstrasse 8. Munich. 80331. Germany

Email: vanya@vanyachan.com | Website: www.vanyachan.com

ADMIRALTY SUBWAY, HK

Subway extension. RMJM-MTRC

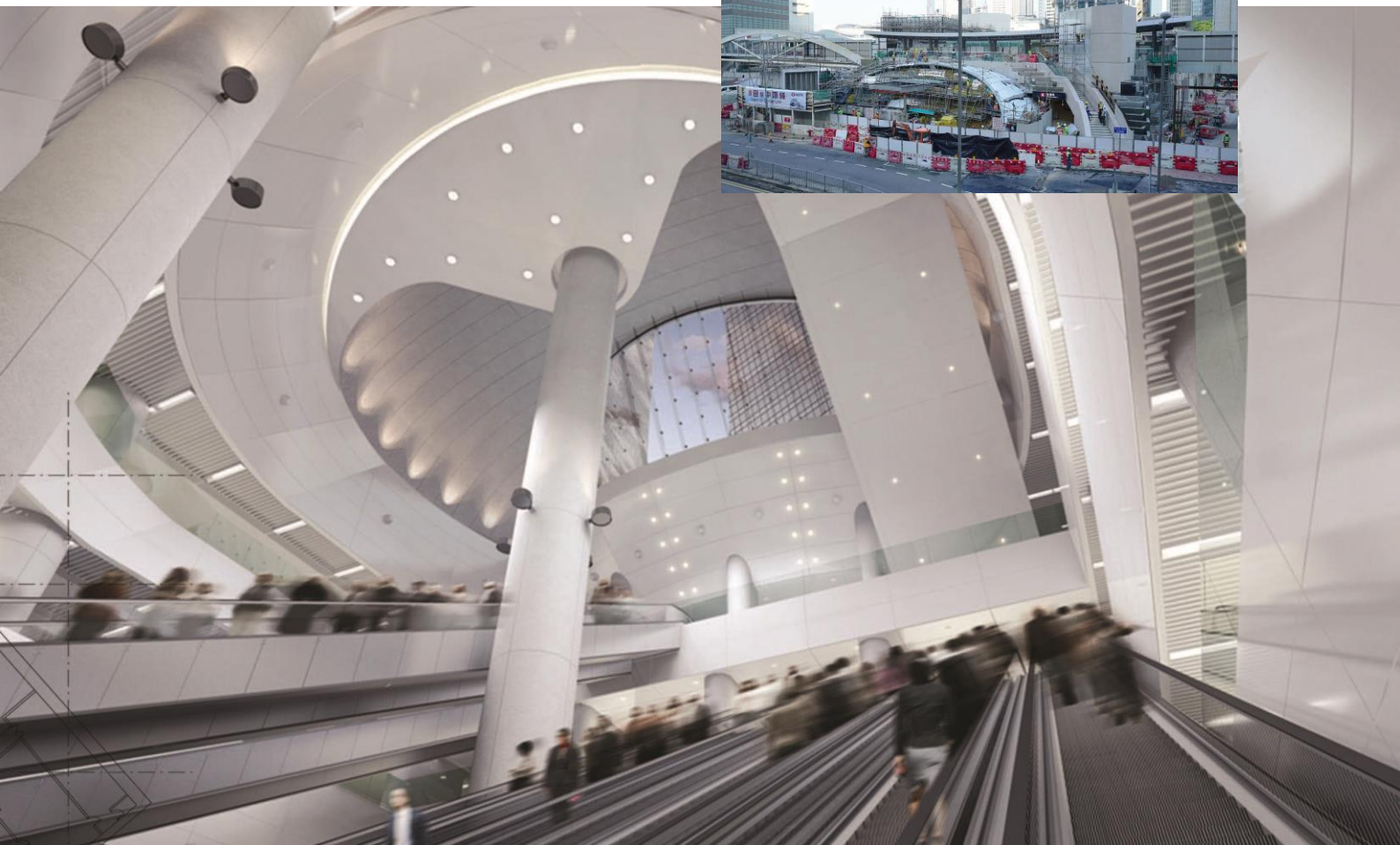
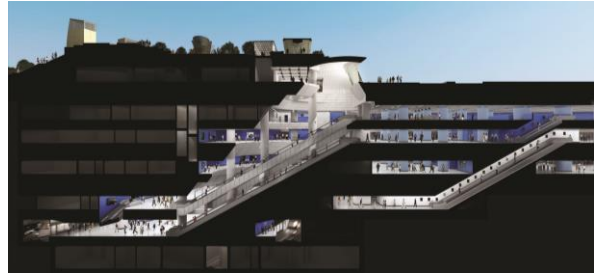
2009 – 2010. Architect.

Expect Completion 2016.

Schematic to Construction documentation.

The extension of the Admiralty subway includes a new exit to Harcourt Garden in central Hong Kong. Two new rail lines need to be incorporated into the existing station. Tunneling below the existing station was required. Constraints from neighboring parking lots, foundations and existing vent shafts intensified the complexity. Future patronage flow would increase to 3/4 million people daily.

Designed & Coordinated new public & BOH vertical elements including 33 escalators, 6 public stairs, 50 BOH stairs and 6 lifts. Assisted in the design of the central atrium and all FOH coordination





VANYA CHAN

Marienstrasse 8. Munich. 80331. Germany

Email: vanya@vanyachan.com | Website: www.vanyachan.com

COTAI STRIP PARCEL 7&8, MACAU

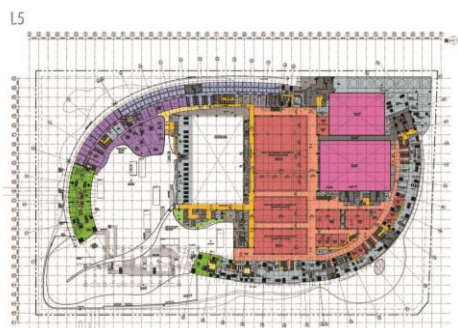
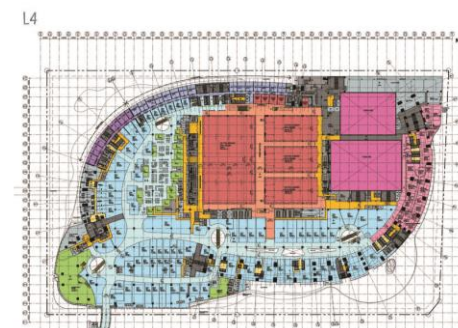
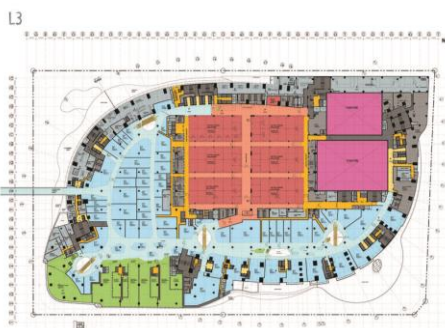
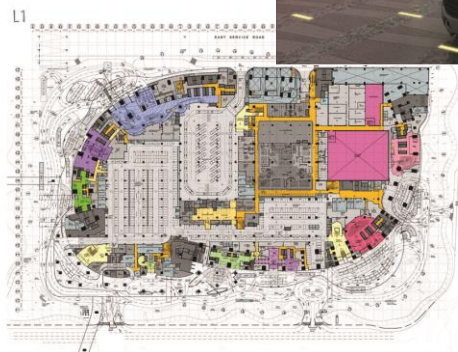
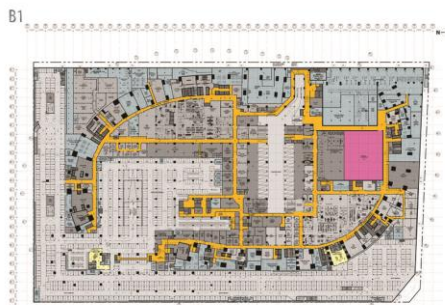
Casino design +1,000,000 sq m

2007 – 2008. Concept - Schematic design.

Assistant Architect

A design between pure forms and integrated functions. A massive structure housing 5 hotels, 2 serviced apartments, & 2 casinos under 2 hotel operators was designed. Two identities with shared facilities in the podium were required. Two hotel towers opened views toward the gateway to Mainland China and the principal casino, the Venetian, at the end of the Cotai Strip. Shared facilities include exhibition spaces, theatres, retail, F&B, parking, & BOH.

Developed podium plans in coordination with facade, section and tower sub-teams. Participated in Las Vegas/San Francisco team as liaison with the client and consultants.





VANYA CHAN

Marienstrasse 8. Munich. 80331. Germany

Email: vanya@vanyachan.com | Website: www.vanyachan.com

LUSHAN BLVD, CHENGDU

Mixed-use development, Aedas

2011 - . Concept - Schematic design.

Senior Architect

This mixed-use project was worked in conjunction with Tishmen Speyer and is located at the heart of Chengdu, a growing economic hub in China. Included in the development are office towers, commercial strips, residential villas, SOHOs & apartments, and hotels. The design was classic to Tishmen Speyer's style as modern, simple and elegant. Functions received simple form definitions, softly integrated into the building façade adding to the subtle finesse of the design.

